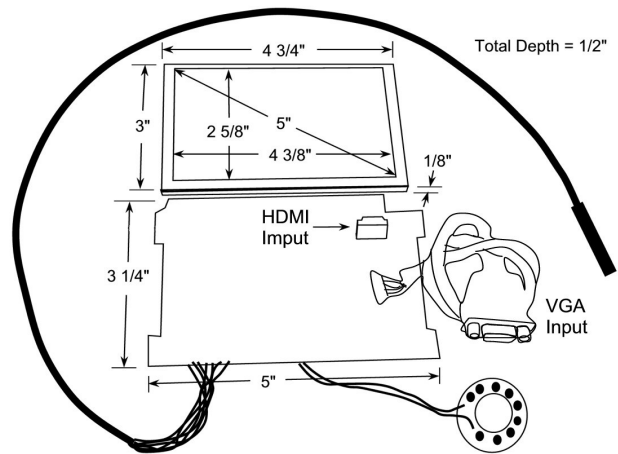
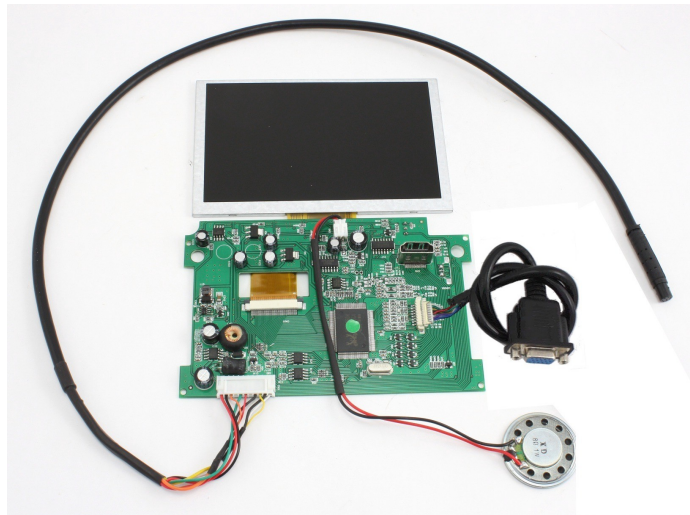


LCD5WHDMI

TECHNICAL SPECIFICATIONS

5" WIDESCREEN VIDEO/VGA/HDMI INPUT HIGH RESOLUTION OPEN FRAME LCD MODULE

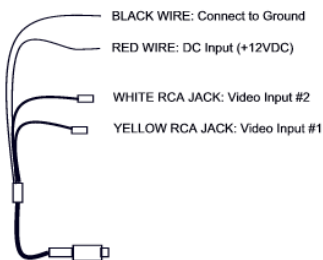


FEATURES

- HIGH RESOLUTION
- "SLIM" DESIGN
- NTSC/PAL VIDEO
- HDMI INPUT
- VGA INPUT
- REMOTE CONTROL

SPECIFICATIONS

DISPLAY:	5" Widescreen Color TFT LCD
INPUT SIGNAL:	NTSC/PAL/VGA/HDMI
DOT FORMAT:	800 x 480
BACK LIGHT:	LED
BRIGHTNESS RATING:	300 NIT
VIEWING ANGLE (L/R/T/B):	50°/70°/70°/70°
POWER REQUIREMENTS:	12VDC @ 300 mA
VIDEO INPUT LEVEL:	1.0 V p-p (positive) 75 Ohm
DIMENSIONS (WxHxD):	LCD 4 3/4"(W) x 3"(H) x 1/8"(D) BOARD: 5"(W) x 3 1/4" (H) x 1/2"(D)
ACTIVE AREA:	4 1/4" x 2.5"
OPERATING TEMPERATURE:	-20°C ~ 70°C (-4°F ~ +158°F)
STORAGE TEMPERATURE:	-30°C ~ 80°C (-22°F ~ +176°F)



*Specifications subject to change without notice.

Miller Technologies
 109 Fairytale Lane
 Surf City, NC 28445

**Miller
 Technologies**

Pho: (910) 328-2829
Fax: (910) 328-5494
Email: info@millertech.com

www.millertech.com