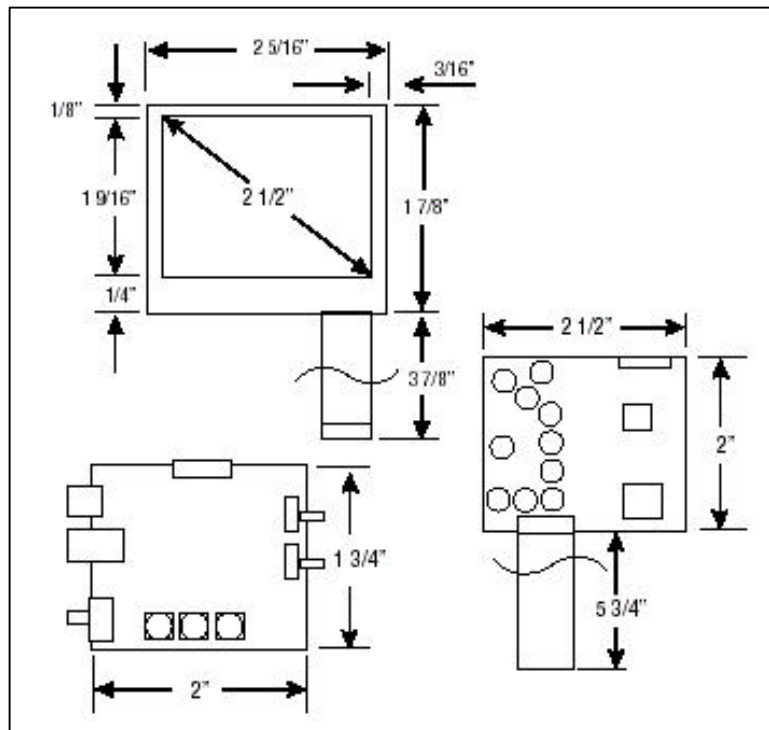


# LCD25L

# TECHNICAL SPECIFICATIONS

## 2.5" COLOR TFT LCD OPEN FRAME MONITOR



### FEATURES

- Flip Image Switch
- Mirror Image Switch
- Anti-glare
- Long Life (80,000 hrs.) LED Backlight

### SPECIFICATIONS

DISPLAY:	2.5" Color TFT LCD
INPUT SIGNAL:	Composite, NTSC/PAL
DOT FORMAT:	480 x 234
BACKLIGHT:	LED
LAMP LIFE:	80,000 Hrs.
BRIGHTNESS RATING:	200 NIT
CONTRAST RATIO:	150:1
VIEWING ANGLE (L/R/T/B):	45°/45°/10°/30°
POWER REQUIREMENTS:	12VDC @ 90 mA
DIMENSIONS (HxWxD):	1 7/8" x 2 5/16" x 1/8"
DRIVER BOARD (HxWxD):	2" x 2 1/2" x 9/32"
CONTROL BOARD (HxWxD):	1 3/4" x 2" x 1/2"
MONITOR MOUNTING:	Module: None, PC Board: Screw
OPERATING TEMPERATURE:	0° ~ 60°C
STORAGE TEMPERATURE:	-25° ~ 80°C

Miller Technologies  
109 Fairytale Lane  
Surf City, NC 28445

Miller  
Technologies

[www.millertech.com](http://www.millertech.com)

Pho: (910) 328-2829  
Fax: (910) 328-5494  
Email: [info@millertech.com](mailto:info@millertech.com)