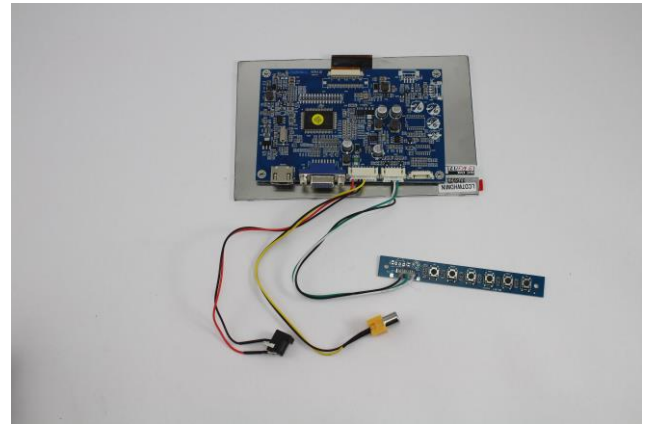
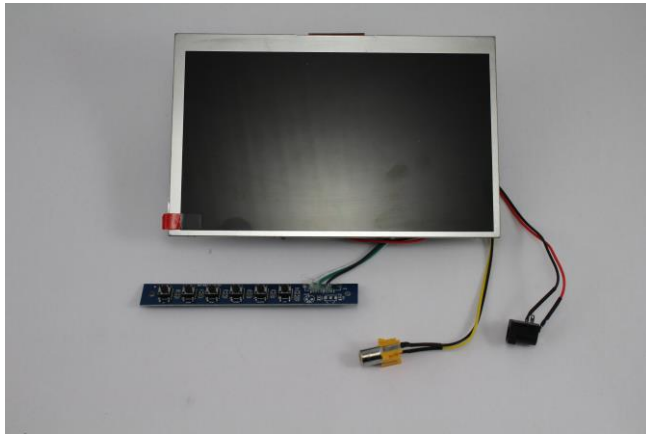


LCD7WHDMIN

TECHNICAL SPECIFICATIONS

7" WIDESCREEN VGA & HDMI INPUT HIGH RESOLUTION OPEN FRAME LCD MODULE



FEATURES

- HIGH RESOLUTION
- "SLIM" DESIGN
- HDMI INPUT
- VGA INPUT

SPECIFICATIONS

DISPLAY:	7" Widescreen Color TFT LCD
INPUT SIGNAL:	VGA/HDMI
DOT FORMAT:	1024 x 600
BACK LIGHT:	LED
BRIGHTNESS RATING:	230 NIT
VIEWING ANGLE (L/R/T/B):	65°/65°/60°/65°
POWER REQUIREMENTS:	12VDC @ 450 mA
VIDEO INPUT LEVEL:	1.0 V p-p (positive) 75 Ohm
DIMENSIONS (WxHxD):	165.75 x 105.39 x 2.7mm (6.5" x 4.25" x 0.11")
ACTIVE AREA:	153.6 X 90MM (6" X 3.5")
OPERATING TEMPERATURE:	-10°C ~ 60°C (+14°F ~ +140°F)

**Specifications subject to change without notice.*

Miller Technologies
109 Fairytale Lane
Surf City, NC 28445

Miller
Technologies

www.millertech.com

Pho: (910) 328-2829
Fax: (910) 328-5494
Email: info@millertech.com