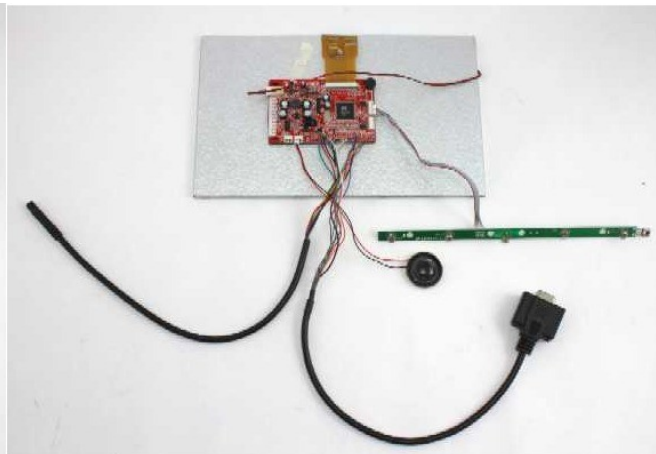
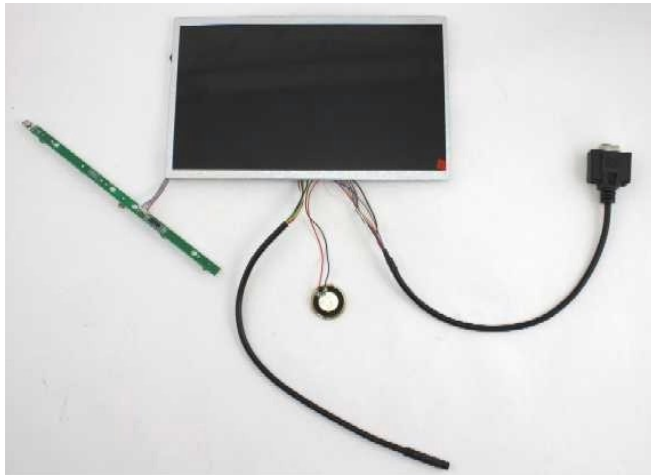


# LCD10WVGA LCD10WVGATS

## TECHNICAL SPECIFICATIONS

10.1" WIDESCREEN VGA & VIDEO INPUT OPEN FRAME  
LCD MODULE WITH OPTIONAL USB TOUCH SCREEN



### FEATURES

- HIGH RESOLUTION
- "SLIM" DESIGN
- MIRROR IMAGE (LEFT/RIGHT)
- OPTIONAL USB TOUCH SCREEN
- FLIP IMAGE (TOP/BOTTOM)
- SPEAKER
- IR REMOTE

### SPECIFICATIONS

<b>DISPLAY:</b>	10.1" Widescreen Color TFT LCD
<b>INPUT SIGNAL:</b>	NTSC & PAL, VGA
<b>DOT FORMAT:</b>	1024 x 600
<b>BACK LIGHT:</b>	LED
<b>BRIGHTNESS RATING:</b>	300 NIT
<b>VIEWING ANGLE (L/R/T/B):</b>	65°/65°/40°/15°
<b>POWER REQUIREMENTS:</b>	12VDC @ 450 mA
<b>VIDEO INPUT LEVEL:</b>	1.0 V p-p (positive) 75 Ohm
<b>DIMENSIONS (WxHxD) MONITOR:</b>	9 1/4" (W) X 5 5/8" (H) X 1/2" (D)
<b>CONTROL BOARD:</b>	8 3/8" (L) X 3/8" (H) X 1/2" (D)
<b>OPERATING TEMPERATURE:</b>	0°C ~ 50°C (+32°F ~ +122°F)
<b>STORAGE TEMPERATURE:</b>	-30°C ~ +70°C (-22°F ~ +158°F)

\*Specifications subject to change without notice.

**Miller Technologies**  
109 Fairytale Lane  
Surf City, NC 28445

**Miller  
Technologies**

**Pho: (910) 328-2829**  
**Fax: (910) 328-5494**  
**Email: info@millertech.com**

[www.millertech.com](http://www.millertech.com)