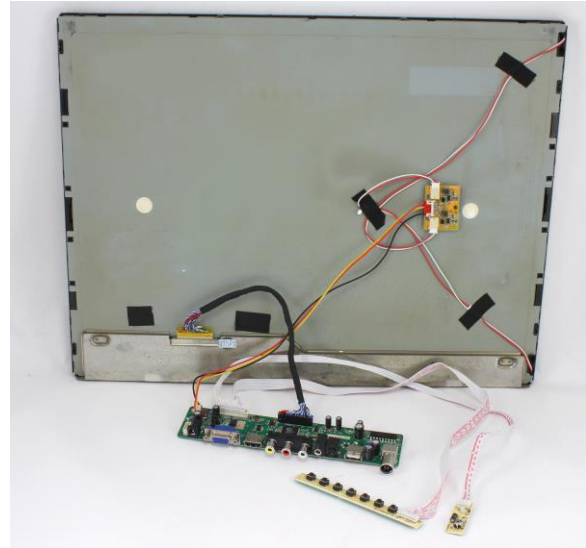


# LCD20VGAC

## TECHNICAL SPECIFICATIONS

### 20" 4:3 VIDEO/VGA/HDMI INPUT OPEN FRAME LCD MODULE



#### FEATURES

- 20" TFT LCD, 4:3 ASPECT RATIO
- FLIP IMAGE (TOP-TO-BOTTOM)
- MIRROR IMAGE (LEFT-TO-RIGHT)
- IDEAL FOR TELEPROMPTER USE
- VIDEO INPUT
- COMPUTER INPUT
- HDMI INPUT
- OSD (ON SCREEN DISPLAY)

#### SPECIAL NOTE

\* These specifications are typical. While the interface board remains constant, the LCD panel used may vary depending upon availability. 20" LCD panels are no longer being manufactured.

#### SPECIFICATIONS

<b>DISPLAY:</b>	20" Color TFT LCD
<b>INPUT SIGNAL:</b>	NTSC/PAL/VGA/HDMI
<b>RESOLUTION:</b>	1280 x 1024, SXGA
<b>ACTIVE AREA:</b>	16.25"(W) x 12.25"(H)
<b>BRIGHTNESS RATING:</b>	350 NIT TYP. *
<b>VIEWING ANGLE (L/R/T/B):</b>	85°/85°/80°/80° Typ.*
<b>NUMBER OF PIXELS:</b>	480,000
<b>POWER REQUIREMENTS:</b>	12VDC @ 1.6A
<b>VIDEO INPUT LEVEL:</b>	1.0 V p-p (positive) 75 Ohm
<b>DIMENSIONS (HxWxD):</b>	17"(W) x 13"(H) x 1/2"(D)*
<b>INTERFACE BOARD DIM:</b>	7 3/8" (W) x 2"(H) x 5/8"(D)
<b>OPERATING TEMPERATURE:</b>	0° ~ 50°C (32° ~ 122°F)
<b>STORAGE TEMPERATURE:</b>	-30° ~ 60°C (-22° ~ 140°F)
<b>SURFACE:</b>	Antiglare, Hard Coating (3H)
<b>DISPLAY COLORS:</b>	16.7M

\*Specifications subject to change without notice.

Miller Technologies  
109 Fairytale Lane  
Surf City, NC 28445

Miller  
Technologies

[www.millertech.com](http://www.millertech.com)

Pho: (910) 328-2829  
Fax: (910) 328-5494  
Email: [info@millertech.com](mailto:info@millertech.com)